

## 2008 Preliminary Forecast of the Summer Hypoxic Zone Size, Northern Gulf of Mexico

---

### Abstract

A preliminary forecast of the size of the hypoxic zone in the northern Gulf of Mexico for July, 2008, is that it will cover between 25,631 to 26,602 km<sup>2</sup> (9,896 to 10,271 mi<sup>2</sup>) of the bottom of the continental shelf off Louisiana and Texas. This forecast is based on the May nitrogen concentration from the Mississippi River measured at Baton Rouge, Louisiana, and the May Mississippi River discharge at Tarbert Landing, Mississippi. If the area of hypoxia becomes this large, then it will be 17 to 21% larger than at any time since systematic mapping of the hypoxic zone began in 1985.

### Caveats:

1) This prediction discounts the effect of large storm events, which will temporarily disrupt the physical and biological system attributes promoting the formation of the low oxygen zone in bottom waters; 2) The nitrate-nitrogen level for Baton Rouge is used as a preliminary estimate of the nitrate load to the Gulf of Mexico from the Mississippi River watershed. An estimate from the USGS for the lower Mississippi River (main channel + Atchafalaya River) will be released in early July and used for the final prediction; 3) The potential space on the shelf where hypoxia occurs may be limited by the bathymetry and physical constraints.

---

### Introduction

#### 1). Hypoxic water mass

Hypoxic water masses form in bottom waters of the northern Gulf of Mexico when the oxygen concentration falls below 2 mg l<sup>-1</sup>. The hypoxic water is distributed across the Louisiana shelf west of the Mississippi River and onto the upper Texas coast from near shore to as much as 125 km offshore, and in water depths extending from the shore up to 60 m (Rabalais et al. 2007). Hypoxic waters may form in two distinct areas west of the Mississippi and Atchafalaya River deltas, but more often forms a single continuous zone.

Systematic mapping and monitoring of the area of hypoxia (dissolved oxygen < 2 mg l<sup>-1</sup>) in bottom waters began in 1985. Its size has ranged between 40 to 22,000 km<sup>2</sup> during July and averaged 16,700 km<sup>2</sup> from 2000-2007 (excluding two years when there were strong storms just before the hypoxia survey). The hypoxic zone size averaged 12,700 km<sup>2</sup> over the period 1985-2005, with a range from negligible in 1988 (a summer drought year for the Mississippi River basin) to 22,000 km<sup>2</sup> in 2002.

Hypoxia, as a large-scale phenomenon, was unlikely to have occurred before the 1970s. Hypoxic water masses form from spring to fall on this coast because the consumption of oxygen in bottom water layers exceeds the re-supply of oxygen from the atmosphere. The re-aeration rate is

negatively influenced by stratification of the water column, which is primarily dependent on the river's freshwater discharge. The oxygen consumption rate in the bottom water is dependent on the formation of organic matter in the surface layer, its sinking to the bottom layer, and its decomposition. The overwhelming supply of organic matter respired in the bottom layer is from the downward flux of organic matter produced in the surface layer. The organic matter production rate is directly related to the nitrogen supply rate. The transport to the bottom layer is the result of sinking of individual cells (considered a minor contribution), as the excretory products of the grazing predators (zooplankton), which 'package' them as fecal pellets, or as aggregates of cells, detritus and mucus. The respiration of this organic matter declines as it falls through the water column (Turner et al. 1998), but the descent rate alongshore the Louisiana-Texas shelf is rapid enough so that sufficient oxygen consumption on the shallow shelf occurs in the bottom layer and sediments to create a zone of hypoxia that is constrained by the geomorphology of the shelf and water movement. Microbial decomposition in the bottom layer degrades the organic matter and is the principle pathway for oxygen consumption. The significance of reducing nutrient loads to these coastal waters rests on this coupling between the organic matter produced in response to these nutrients and its respiration in the bottom of the water column (MRGOM WNTF 2001, 2008; Rabalais et al. 2002, 2007; SAB 2008).

## Models

### 2. Predictions using models

Models are used to summarize information, to test assumptions and to make predictions that may be useful for other purposes, including management. There are multiple models of the size of the hypoxic zone that are useful in evaluating the influence of nitrogen load and variations in ocean currents, climate, etc., on the size of the "Dead Zone." These models do not always produce similar results, and model improvement is one focus of ongoing research. The simple statistical model is the most accurate model based on past performance (Turner et al. 2006, 2008). The nitrate+nitrite N load delivered to the Gulf of Mexico by the Mississippi River in May is used for predictive purposes. The residence time of the surface waters along this coast is about 2 to 3 months in the summer, hence the 2 to 3 month lag between the loading rate calculated in May and the size of the hypoxic zone in July. The ecosystem is evolving, however. The size of the hypoxic zone for the same amount of nitrogen loading increases each year, for example, and the model might need to be adjusted to account for the limited space left on the shelf to accommodate the potential size of the hypoxic zone resulting from nitrogen loading larger than observed so far.

The statistical model describes the previous size of the hypoxic zone quite well. The prediction, for example, in 2006 and 2007 was 99% and 107%, respectively, of the measured size.

### 3. Model parameters for 2008

#### 3a. Discharge data

Data on the discharge of the Mississippi River at Tarbert Landing, MS (measured by the US Army Corps of Engineers; graphics at <http://www.mvn.usace.army.mil/eng/edhd/tar.gif>) is used in this year's model. The final model (to be completed in July, see below) will be based on the May discharge from the main stem of the Mississippi River and the Atchafalaya River.

### 3b. Nitrate load

The 2008 May nitrate+nitrite N concentration data is based on 5 measurements of nitrate+nitrite concentration in the Mississippi River flowing past Baton Rouge, Louisiana. The determination of the nitrate+nitrite N concentration followed EPA approved methods (Lachate autoanalyzer for nitrate+nitrite N).

The concentration  $\times$  discharge equals the nitrate-nitrite N load. The final prediction of nitrate+nitrite N loading from the Mississippi River into the Gulf of Mexico is from the United States Geological Survey (USGS), which publishes estimates of the flow-adjusted nutrient loads to the Gulf including nitrate+nitrite N, total phosphorus (TP), and total nitrogen (TN), and also loadings from the main channel of the Mississippi River and from the Atchafalaya River. The nitrate+nitrite N load in May is about 89% of the N total nitrogen load ( $R^2 = 0.91$ ). The USGS includes an estimate of the 95% confidence range for the nitrogen load, which averages 41% of the predicted value. The USGS web site has more information on the calculation and data ([http://toxics.usgs.gov/pubs/of-2007-1080/discussion\\_net\\_improve.html](http://toxics.usgs.gov/pubs/of-2007-1080/discussion_net_improve.html)).

The nitrate concentration in May 2008 is 79% of that in May 2007, but the river discharge was 75% higher. The combination of these differences means that nitrogen loading to the Gulf of Mexico in May this year will be 37% higher than last year, and the highest since measurements began in 1970 (Figure 1). The intensive farming of more land, including crops used for biofuels, has contributed to this high nitrogen loading rate (Donner and Kucharik 2008).

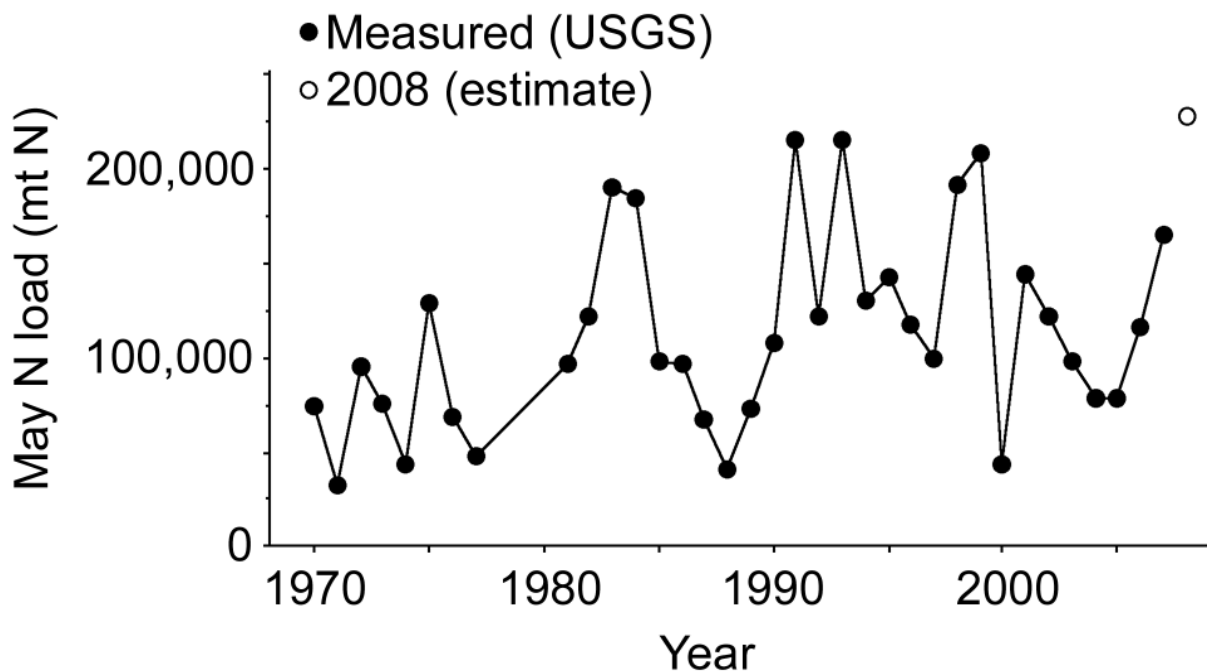


Figure 1. The total loading of nitrate+nitrite N to the Gulf of Mexico from the Mississippi River watershed for May.

### 3c. Hypoxic zone data

Data on the size of the hypoxic zone in late July from 1985 to 2007 are based on annual field measurements (data available at <http://www.gulfhypoxia.net>). The 2008 mapping cruise will be conducted on July 21-29. Hypoxia data will be posted daily at the web site above. The values for 1989 (no funding available) and 1978-1984 are estimated from contemporary field data. The values for before 1978 assume that there was no significant hypoxia then and are based on results from various models. Data for three years were not included in the analysis because there were strong storms just before or during the cruise (1998, 2003 and 2005). These storms, by comparison to the pre-cruise sampling and data collected during the cruise, disrupted the water column and re-aerated the water column. It may take several weeks, depending on water temperature and initial dissolved oxygen concentration, for respiration to reduce the dissolved oxygen concentration to  $<2 \text{ mg l}^{-1}$  after the water column stratification is re-established.

### 3d. Two data sets

Two data sets were created to predict the size of the hypoxic zone in 2008. One data set included only the field-based measurements of the size of the hypoxic zone; the second data set included all of the field-based data and also estimates of the hypoxic zone using surrogate measurements for 1978-1984 and 1989.

## **Prediction for 2008**

### 4. Predictions for 2008, including final prediction

A preliminary forecast of the size of the hypoxic zone in the northern Gulf of Mexico for July, 2008, is that it will cover between 25,631 to 26,602 km<sup>2</sup> (9,896 to 10,271 mi<sup>2</sup>) of the bottom of the continental shelf off Louisiana and Texas (Figure 2). This is equivalent to an area about the size of the state of Massachusetts. The average size of the annual hypoxia-affected area since 1990 has been approximately 15,660 km<sup>2</sup> (6,046 mi<sup>2</sup>). The largest size was 22,000 km<sup>2</sup> (8,894 mi<sup>2</sup>) in 2002. Tropical storms and hurricanes have the potential of disrupting the physical structure of the water column and aerating the bottom layer. If no strong storms appear, then this year's Dead Zone is predicted to be 17-21% larger than previously measured, and to stretch into Texas continental shelf waters.

The final prediction should be ready for the first week in July, 2008. This result will be based on the May nitrogen load from the main stem of the Mississippi River and the Atchafalaya River, which is provided by the U.S. Geological Survey.

A post-cruise assessment will be made at the end of the summer.

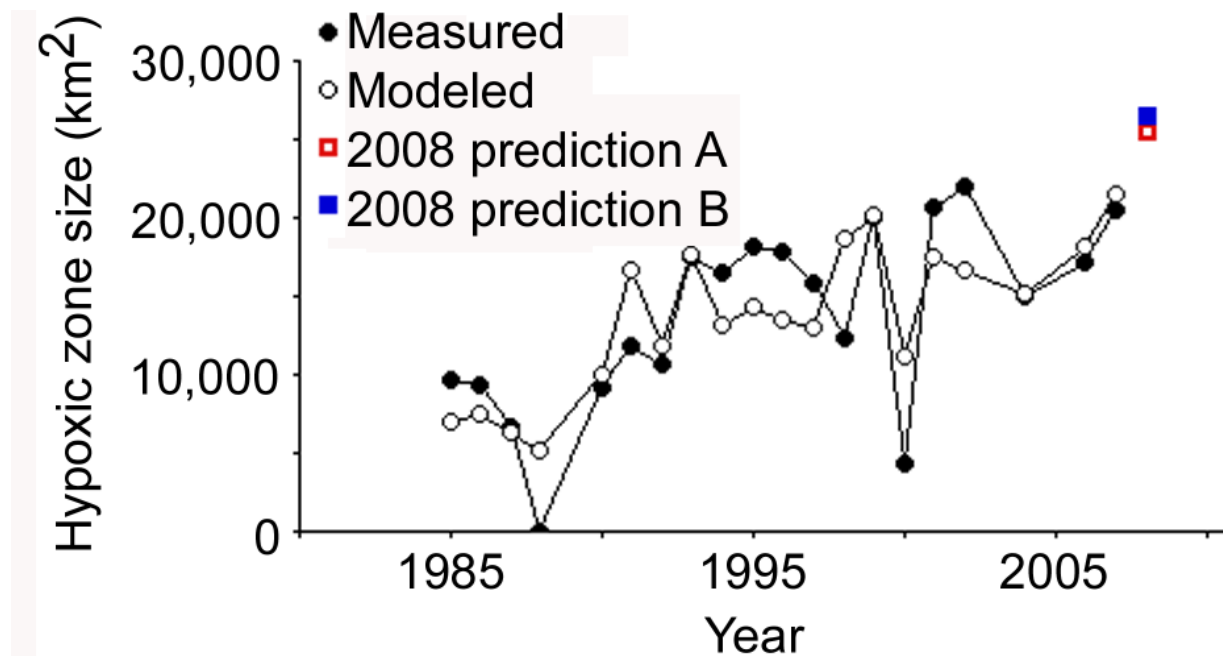


Figure 2. The measured and model output and the predicted the size of the hypoxic zone for 2008. Conversion factor: A prediction was made for each of the two data sets.  $10,000 \text{ km}^2 = 3,861 \text{ mi}^2$ .

### Acknowledgments

Support received from the NOAA Center for Sponsored Coastal Ocean Research, Coastal Ocean Program, Grant Nos. NA06NPS4780197 to Louisiana Universities Marine Consortium and NA06OP0529 to Louisiana State University.

### References

- Donner, S. D., C. J. Kucharik 2008. Corn-based ethanol production compromises goal of reducing nitrogen export by the Mississippi River. **Proc. National Academy of Sciences (USA)** 105: 4513-4518.
- MRGOM WNTF (Mississippi River/Gulf of Mexico Watershed Nutrient Task Force). 2001 *Action Plan for Reducing, Mitigating, and Controlling Hypoxia in the Northern Gulf of Mexico*; Office of Wetlands, Oceans, and Watersheds, U.S. Environmental Protection Agency; Washington, DC. <http://www.epa.gov/msbasin/taskforce/pdf/actionplan.pdf>
- MRGOM WNTF (Mississippi River/Gulf of Mexico Watershed Nutrient Task Force) 2008. *Gulf Hypoxia Action Plan for Reducing, Mitigating, and Controlling Hypoxia in the Northern Gulf of Mexico*; Office of Wetlands, Oceans, and Watersheds, U.S. Environmental Protection Agency; Washington, DC. [http://www.epa.gov/msbasin/taskforce/pdf/2008draft\\_actionplan.pdf](http://www.epa.gov/msbasin/taskforce/pdf/2008draft_actionplan.pdf)

- Rabalais, N. N., R. E. Turner, and D. Scavia 2002. Beyond science into policy: Gulf of Mexico hypoxia and the Mississippi River. **BioScience** 52: 129-142.
- Rabalais, N. N., R. E. Turner, B. K. Sen Gupta, D. F. Boesch, P. Chapman, M. C. Murrell 2007. Hypoxia in the northern Gulf of Mexico: Does the science support the plan to reduce, mitigate and control hypoxia? **Estuaries and Coasts** 30: 753-772.
- Science Advisory Board (SAB) 2008. *Hypoxia in the Gulf of Mexico, An Update*. U.S. Environmental Protection Agency, Science Advisory Board (SAB) Hypoxia Panel Draft Advisory Report. [http://www.epa.gov/sab/pdf/11-19-07\\_hap\\_draft.pdf](http://www.epa.gov/sab/pdf/11-19-07_hap_draft.pdf)
- Turner, R. E., N. Qureshi, N. N. Rabalais, Q. Dortch, D. Justić, R. Shaw and J. Cope 1998. Fluctuating silicate:nitrate ratios and coastal plankton food webs. **Proc. National Academy of Sciences (USA)** 95: 13048-13051.
- Turner, R.E., N.N. Rabalais, and D. Justić 2006. Predicting summer hypoxia in the northern Gulf of Mexico: Riverine N, P, and Si loading. **Marine Pollution Bulletin** 52:139-148.
- Turner, R. E., N. N. Rabalais and D. Justić 2008. Gulf of Mexico hypoxia: Alternate states and a legacy. **Environmental Science and Technology** 42: 2323 - 2327

Contacts:

R. Eugene Turner (LSU, eturne@lsu.edu)

Nancy Rabalais (LUMCON, nrabalais@lumcon.edu)

Notes:

The public release of the 2008 Action Plan and the signing ceremony will be held on June 16 from 1 to 5 pm at The Historic New Orleans Collection, Royal Street Complex, Counting House, at 533 Royal Street, New Orleans, LA.

The public session of the Task Force Meeting will be held on June 17 from 8:30 am to 12:30 pm at the Marriott New Orleans at 555 Canal Street, New Orleans, LA. The purpose of the meeting is to publicly release the 2008 Action Plan; approve the 2008 Annual Operating Plan; and discuss composition of the Task Force.

Appendix. Mississippi River discharge (cubic feet per second  $\times 1000$ ) at Tarbert Landing, MS from 1930 to 10 June 2008. <http://www.mvn.usace.army.mil/eng/edhd/tar.gif>

